



## **SARITSA FOUNDATION (SARITSA CHARITY TRUST)**

**A Mobile University**

***Prepares & builds capacity amongst Community to Reduce Risks from Disasters and Climate Change by reaching to their “Door Steps”***

**“REACH TO PEOPLE, TALK TO PEOPLE AND PREPARE PEOPLE INVOLVE PEOPLE”-**

**Headquarters - MUMBAI INDIA**

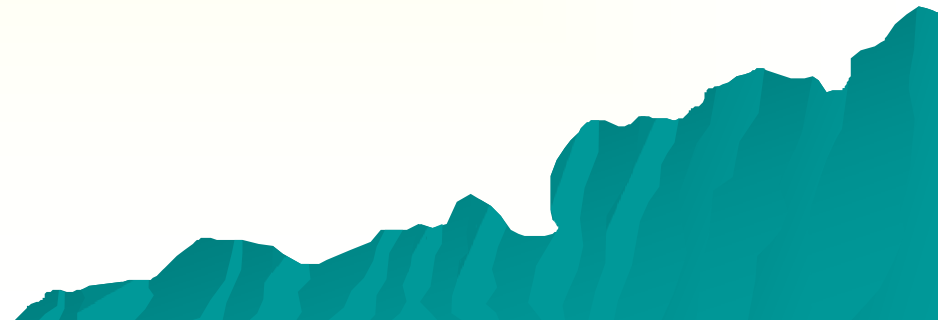


1. *Providing equal opportunities to disabled for Disaster Risks Reduction sensitizing public private partnership (A campaign study with Good Practices and lessons).*


# Introduction



# The Awakening



**Reality check and an  
introspection—missing hearts  
and soul for preparing disabled  
people for disasters.**


A stylized, teal-colored silhouette of a mountain range is located in the bottom right corner of the slide. The mountains are jagged and layered, creating a sense of depth and texture.

# Discrimination – No where they are welcomed ?

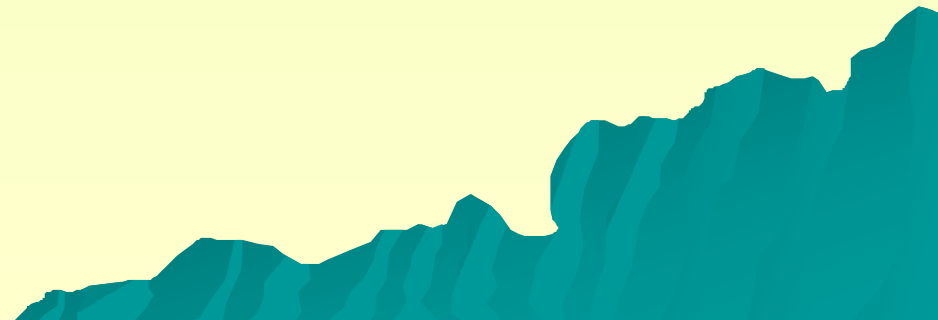


# Discriminated - Yet Faith in God! Accept them Don't undermine them



- ◆ **An object of Pity (Hypocritical sympathy mostly)**
  - ◆ **Parents and families are shy of social interaction with disabled member of their families and take them around with them**
  - ◆ **View them for charity / donations**
  - ◆ **Medical problems**
  - ◆ **Undermine their ability with no common centers of education**
  - ◆ **No one trust them are considered as burden to the society**
  - ◆ **No one bothers to prepare and educate them to cope with disasters and emergencies**
- 

# Concept



# The Path Finding ( The campaign analysis)



**Vision  
Disability**

**Mobility  
disability**

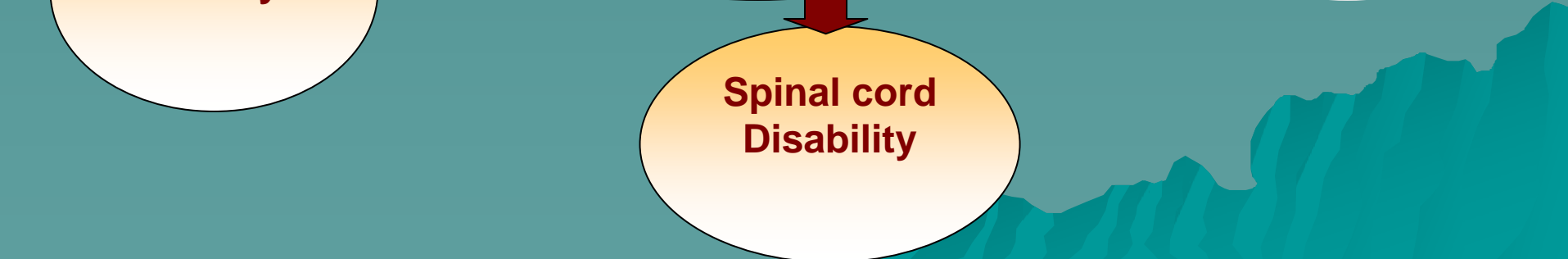
**Brain  
Disability**

**What is a Disability?**  
A disability is a condition or function judged to be significantly impaired relative to the usual standard of an individual or group. The term is used to refer to individual functioning, including physical impairment, sensory impairment, cognitive impairment, intellectual impairment, mental illness, and various types of chronic disease.

**Hearing  
disability**

**Cognitive  
disability**


**Spinal cord  
Disability**



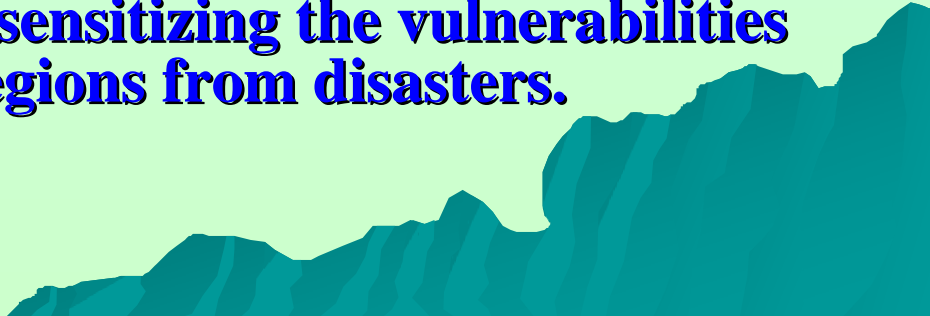
- ◆ **Natural Disasters like Cyclones, Floods , Storms, Droughts, Earthquakes, Tsunamis, Landslides , fresh water scarcity, water pollution, deforestation, wild fire in forest and country side, invasion, etc.**
  - ◆ **Collapse of High Rise Building or Special Structural due to old age and non maintains. The Burst of a Hydro Dam or Reservoir**
  - ◆ **Fire Outbreak in large Areas / High Rise Building / special structures**
  - ◆ **, Terrorist attacks, and various law & order problems including internal uprising,**
  - ◆ **Weapons of Mass destruction – Nuclear, Biological and chemical weapons.**
  - ◆ **Industrial Disasters such as Explosions , Fire Outbreak, Chemical Disasters, Pollution & Emission of Hazardous materials (liquids, gaseous & solids)**
  - ◆ **Highly infectious viruses like Bird flu, SARS, Plague etc**
- 


# Objectives

- ◆ **To commence and deepen the process of awareness amongst disabled to initiate preparedness.**
- ◆ **To develop rapport with disabled to change their mindset of helplessness and powerlessness by reaching to them at their ‘Door Steps’.**
- ◆ **To build capacity by inputs of information, interaction, education with participation and motivation.**
- ◆ **Impart practical training, conduct rehearsals and mock drills to develop skills and confidence.**

- ◆ **Develop individual safety culture to make them believe, I can prepare, I will prepare and I will protect myself.**
  - ◆ **Sensitize governments, administrators, civil society organizations, communities and families to cooperate and accept it as their responsibility and obligation.**
  - ◆ **Promote Public /Private partnership for financial support for the campaign**
  - ◆ **Make provision for Braille books, Pictorial handbooks and sign language facilitators.**
  - ◆ **To seek international cooperation for formulating laws, policies and plans for implementation by states.**
- 

# Methodology Adopted


- ◆ **Reaching to the persons with disabilities at their ‘Door Steps’ with the team of experts in villages, town, cities and disasters prone states, has been a distinctive approach for preparing the disabled for mitigation of risk from disasters.**
  - ◆ **Seeking support of administration of schools, institutions and communities to identify the severity of disability of the selected groups for preparedness , capacity building programmes and prepare training modules accordingly.**
  - ◆ **Raise awareness level and develop their will to be partners, by interacting, inspiring and sensitizing the vulnerabilities to their villages, towns and regions from disasters.**
- 


- ◆ **Provide necessary inputs of Dos and Don'ts on the basis of analyzed level of response capacity and make them rehearse.**
  - ◆ **Encourage buddy system (pair) to practice drills**
  - ◆ **Group competition with stimulated live situations**
  - ◆ **Provide Braille books, Audio books to visually impaired and Pictorial handbooks to physically challenged.**
  - ◆ **Integrate school / institutions staff, parents and the community elements to be partners to support preparedness and encourage disabled to be their own saviors in emergencies where, every one is preoccupied with their own safety.**
  - ◆ **Impact assessment and recommendations from participants**
- 


# Where and How The Project is being Implemented



# Lessons Learned

- ◆ **Disabled people are least aware about their role in preparedness for disasters and their families, communities and administrations are little aware about their obligation and responsibility to mainstream disabled persons in the process of disasters management.**
  - ◆ **Disabled persons were very appreciative for the opportunity provided to them for getting prepared and trained to face disasters. They had never imagined that they can also prepare themselves for disasters.**
  - ◆ **Integrating preparedness within the families by identifying plans and response are important and valuable .**
  - ◆ **Physically, visually and mentally impaired and deaf and dumb people needed different techniques and standards for disaster risks measures and practices. These are more challenging than preparing ordinary people.**
  - ◆ **Disability level analysis is important to select mode of preparedness involving practical training.**
  - ◆ **There was a requirement for more intensive practical training and rehearsals with each participant.**
- 

- ◆ **They liked operating in buddy (pair) system to prepare and face disasters.**
  - ◆ **Visually impaired were found more attentive and receptive to the training. The methodology adopted for them was interactive and directional by the faculty being static at a point which has to be followed in all situations.**
  - ◆ **Physically challenged could learn to respond within the limits of their mobility.**
  - ◆ **Disabled have to be made part of disaster Risk Reduction initiatives. Policy planners and civil organizations community and families have to be encouraged for this process.**
  - ◆ **Population census to be made area - wise, and records be fed to rescue agencies and local administration to facilitate coordination of evacuation in emergencies.**
- 

- ◆ **Evacuation, relief and recovery process requires prior plan and participation by disabled and their families.**
  - ◆ **First Aid has to be made part of knowledge building**
  - ◆ **Sign language faculties should be made aware about the process**
  - ◆ **The preparedness knowledge gave them confidence to support teams who help them in rescue.**
  - ◆ **Public Private partnership is important to provide opportunity to the disabled for protection from disasters and making them part of integral development.**
  - ◆ **Signs of indifference amongst the communities even about their own preparedness were noticed at a number of places. In such a state of behavior, sensitizing mitigation of risks for the disabled by preparedness shall need enormous amount of efforts**
- 

**Measurable  
Impacts  
and  
Quantification**



# Visually Impaired



# Physically Challenged



# Physically Challenged



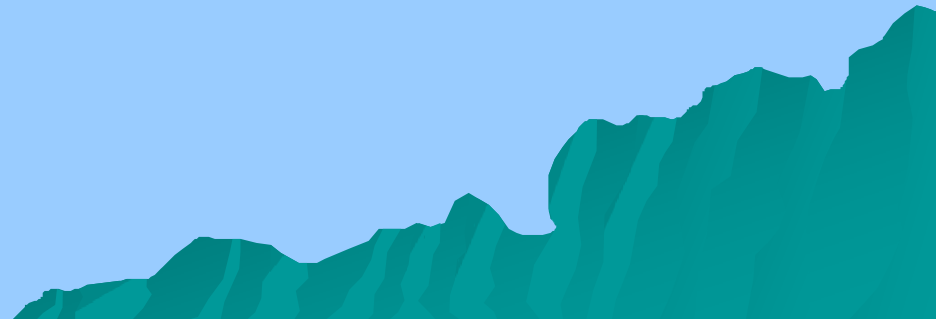
# Deaf & Dumb & Mentally Retarded



# Partnership of Families, Administrators and people in Governance for Preparedness



**Look Forward**



# Contact Us

National Headquarters- Flat No.3 , Pankaj Co operative Housing Society, Sitaram Keer Marg, near Lokmanya Vidya Mandir, Mahim (W) – Mumbai 400016 Tel :- 022-24366370, 24370138 Mobile:- 9323157377

Email :- [Saritsa@vsnl.net](mailto:Saritsa@vsnl.net) & [saritsafoundation.in@gmail.com](mailto:saritsafoundation.in@gmail.com)

Web :- [www.SARITSA FOUNDATION.in](http://www.SARITSA FOUNDATION.in)



**Thank you**

